



BALDWIN PREPARATORY ACADEMY

Good Afternoon, Parents!

Our communication efforts will become more frequent as we approach the start of the school year. We have important updates and reminders to share with you. *Please read this email in its entirety.*

Uniforms: Our BPA uniform store is now live and linked below! Uniforms are required for 10th and 11th grade students and are recommended for 12th grade students. *Cosmetology & Health Science* students will be provided two sets of scrubs (top and bottom), and *Culinary Arts* students will be provided two uniform sets (t-shirt and chef pants). All other program/pathway students will be supplied with two uniform tops (specific to their program) to be worn with khaki pants or jeans, with no holes, purchased by the student. *Automotive Technology* students must wear blue or black pants or jeans with no holes, purchased by the student. Additional uniforms may only be purchased through our official uniform store linked below.

[Link to BPA Uniform Store](#)

Bus Riders: Bus pick-up and drop-off times are attached. Please be flexible during the first few weeks of school and allow a 10-minute window before and after published times, as bus drivers learn to navigate the new routes.

Carline: If your student plans to be dropped off/picked up via carline, please review the attached **carline map**.

Student Drivers: If your student plans to drive to school, please review the attached **student parking map**. All student drivers must have a valid driver's license, complete a parking application and purchase a parking pass. Parking passes will be \$40 for full-time BPA students (10th & 11th grade) and \$10 for seniors. Parking applications and purchasing information will be provided soon.

Construction Update: Baldwin Prep WILL open on August 8th! Much of the building will be completed before the start of school. However, there will likely be minor construction taking place for several weeks on a portion of the building. In this event, areas of the building that remain under construction will **not** be utilized by the school until construction is complete. We have developed a plan to relocate classrooms under

construction to completed areas of the building. We will keep you updated as we get more information.

Communication: To ensure you stay up to date with Baldwin Prep news and events, be sure to bookmark [our website](#) and follow our [Facebook page](#). Also, please sign up for BPA **Remind** for convenient access to important communication and updates. You can join Remind by texting @2425bpa to the number 81010 or by visiting the link below.

[Link to BPA website](#)

[Link to BPA Facebook page](#)

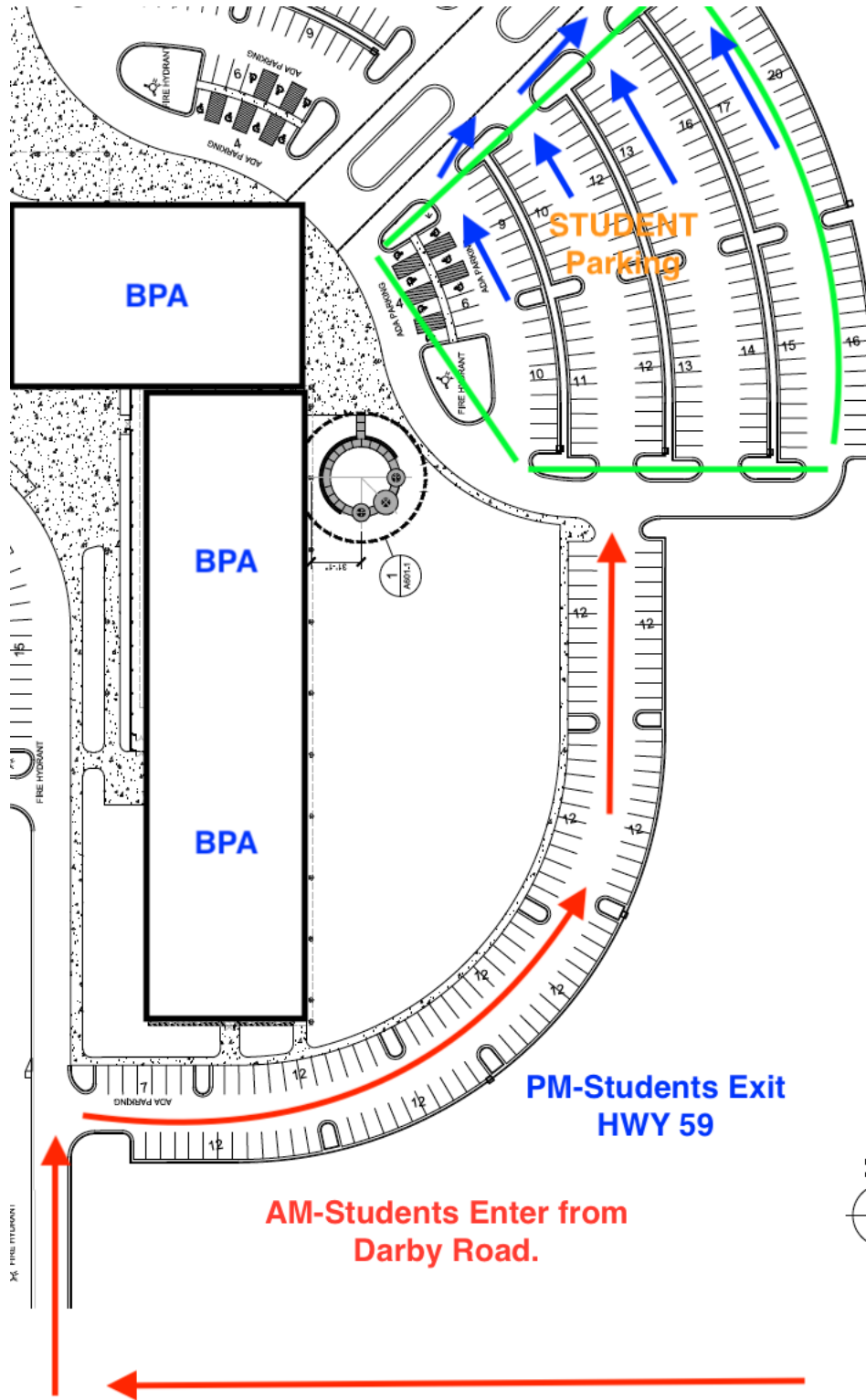
[Link to sign up for Remind](#)

Schedule pick-up: We would like to invite you to pick up student schedules at Baldwin Prep on August 6th from 4:30 p.m. – 6:30 p.m. We plan on hosting a traditional Open House when we have full access to the building. We understand there is a lot of excitement surrounding the opening of the new building and we are happy to invite you to preview the open areas with your student at schedule pick-up. **Schedule pick-up will be available between 4:30 p.m. and 6:30 p.m. on August 6th at 33243 State Highway 59, Loxley, AL.**

We look forward to seeing you soon!

Sincerely,

Baldwin Prep Administration



BPA

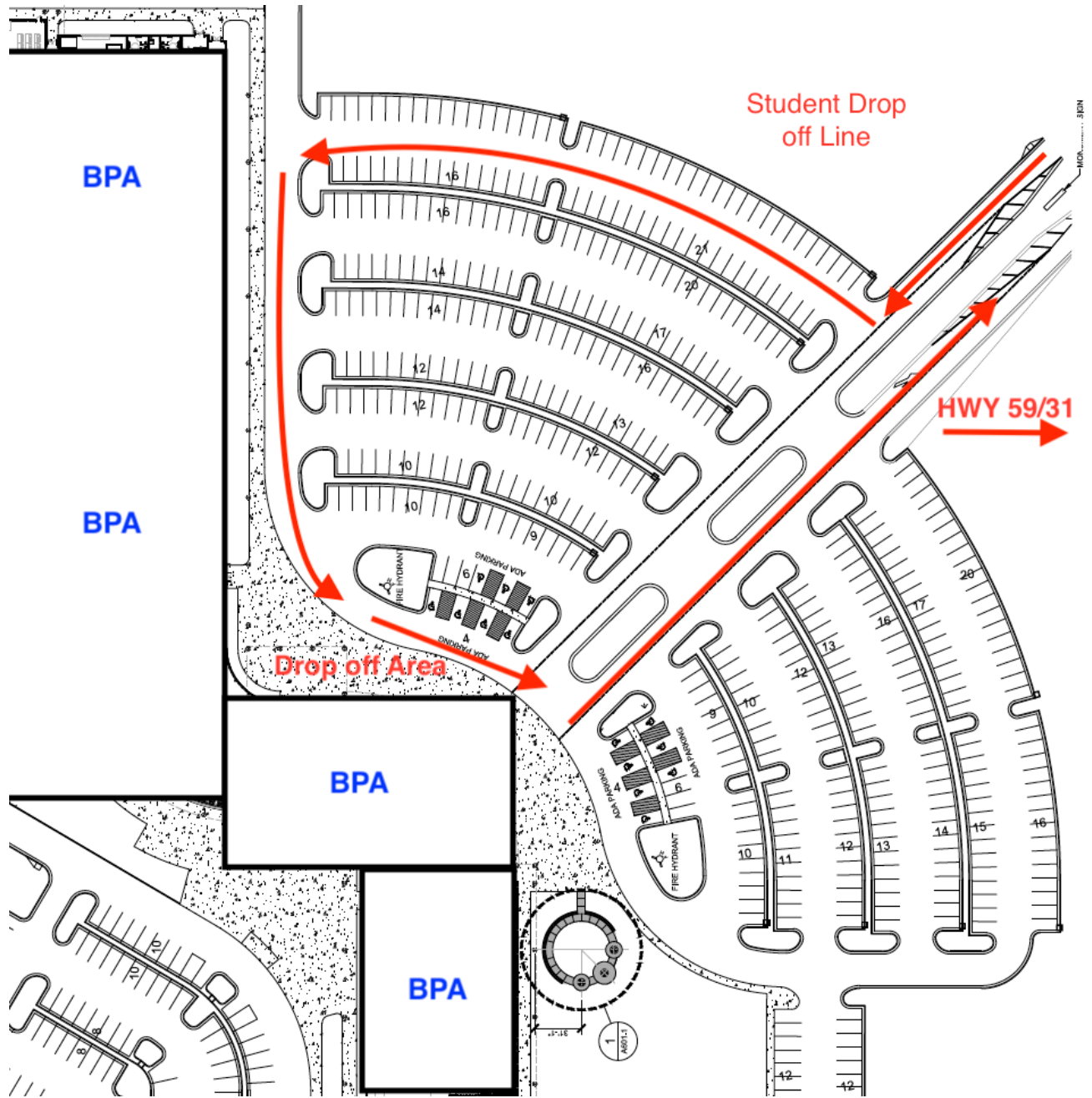
BPA

BPA

STUDENT
Parking

PM-Students Exit
HWY 59

AM-Students Enter from
Darby Road.





Bus # 14-34	Driver: Robert Shuler				
Stop 1	Pickup: 6:35 am	Drop Off: 3:10 pm	Bay Minette	400 East 9th Street (Old BMES)	Parking Available
Stop 2	Pickup: 6:55 am	Drop Off: 2:45 pm	Spanish Fort	35323 Jimmy Faulkner Dr.	Parking Available
Stop 3	Pickup: 7:15 am	Drop Off: 2:35 pm	Spanish Fort	Stonebridge Monticello Blvd.	
PM Only		Drop Off: 2:40pm	Spanish Fort	Spanish Fort High School	

Bus # 14-31	Driver: Linda Mosley				
Stop 1	Pickup: 7:00 am	Drop Off: 2:45 pm	Spanish Fort	6729 SF Blvd., (Rouses)	Parking Available
Stop 2	Pickup: 7:10 am	Drop Off: 2:30 pm	Spanish Fort	30500 AL-181 (Premiere Theater)	

Bus # 14-32	Driver: Chris McClantoc				
Stop 1	Pickup: 7:00 am	Drop Off: 3:10 pm	Daphne	8600 Whispering Pines Rd. (Trione Park)	Parking Available
Stop 2	Pickup: 7:10 am	Drop Off: 2:50 pm	Daphne	Jubilee Farms Clubhouse	Parking Available

Bus # 14-38	Driver: Kela Henry				
Stop 1	Pickup: 6:55 am	Drop Off: 2:55 pm	Daphne	3075 US Hwy 98 (Rouses)	
Stop 2	Pickup: 7:05 am	Drop Off: 3:00 pm	Daphne	2000 Main St. (Lott Park)	
PM Only		Drop Off: 2:40pm	Daphne	Daphne High School	

Bus # 14-37	Driver: Cody Haag				
Stop 1	Pickup: 6:20 am	Drop Off: 2:50 pm	Fairhope	18383 Co Rd 13 (Manley Soccer Complex)	Parking Available
Stop 2	Pickup: 6:30 am	Drop Off: 3:20 pm	Fairhope	7754 US 98 (Barnwell Sports Complex)	Parking Available
Stop 3	Pickup: 6:45 am	Drop Off: 3:05 pm	Fairhope	Volanta Park 523 Volanta Ave.	Parking Available
PM Only		Drop Off: 2:55pm	Fairhope	Fairhope High School	

Bus # 14-36	Driver: Lydia Pratt				
Stop 1	Pickup: 6:45 am	Drop Off: 3:10 pm	Foley	12615 Foley Beach Express (AL Music Hall)	
Stop 2	Pickup: 6:55 am	Drop Off: 3:00 pm	Foley	PAC Warehouse 19752A Underwood Rd.	Parking Available
Stop 3	Pickup: 7:10 am	Drop Off: 2:45 pm	Robertsdale	J.D. Sellars Football Stadium	Parking Available
PM Only		Drop Off: 2:50 pm	Robertsdale	Robertsdale High School	

Bus # 14-35	Driver: Pam McDaniel				
Stop 1	Pickup: 6:20 am	Drop Off: 3:05 pm	Elberta	25250 US Hwy 98 Elberta Grocery	
Stop 2	Pickup: 6:35 am	Drop Off: 3:20 pm	Lillian	34148 Widell Ave. Lillian Community Ctr.	
Stop 3	Pickup: 7:05 am	Drop Off: 2:45 pm	Summerdale	202 E. Sandborn Ave. (South Bus Shop)	Parking Available
PM Only		Drop Off: 3:00pm	Elberta	Elberta High School	

Bus # TBA	Driver: TBA				
PM Only		Drop Off: 2:50pm	Bay Minette	Baldwin County High School Seniors and Extracurricular only	

Bus # TBA	Driver: TBA				
PM Only		Drop Off: 3:00pm	Foley	Foley High School Seniors and Extracurricular only	

